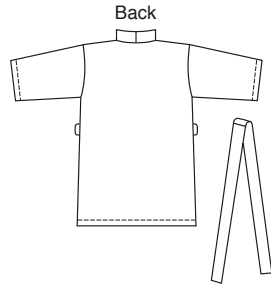


# KWIK Start® LEARN-TO-SEW

ESPECIALLY DESIGNED FOR FIRST SEWING PROJECT!



Unisex kimono-style, wrap robe has extended shoulders, patch pockets, front and neckline band, and tie belt. Robe is very easy to sew and has special easy-to-follow sewing instructions.

## UNISEX

KWIK·SEW®  
price **3177**

DESIGNED FOR LIGHTWEIGHT WOVEN FABRICS

Suggested Fabrics: cotton, cotton types, broadcloth, chambray, flannel, challis

UNISEX ROBE  
Sizes: XS-S-M-L-XL

Size	XS	S	M	L	XL	
Chest	33 (84)	36 (91)	39 (99)	42 (106)	45 (114)	" (cm)
<b>Finished Length at Center Back</b>						
	34 (86)	35 (89)	36 (91)	37 (94)	38 (96)	" (cm)
<b>Material Required:</b> Fabric requirement allows for nap, one-way design or shading. Extra fabric may be needed to match design or for shrinkage.						
<b>Fabric 60" (152 cm) Wide</b>						
	2 1/2 (2.30)	2 1/2 (2.30)	2 5/8 (2.40)	2 7/8 (2.65)	2 7/8 (2.65)	yd (m)
<b>Fabric 45" (115 cm) Wide</b>						
	3 1/4 (3.00)	3 3/8 (3.10)	3 3/8 (3.10)	3 5/8 (3.35)	3 5/8 (3.35)	yd (m)
<b>Notions:</b> Thread, scrap piece of fusible interfacing.						