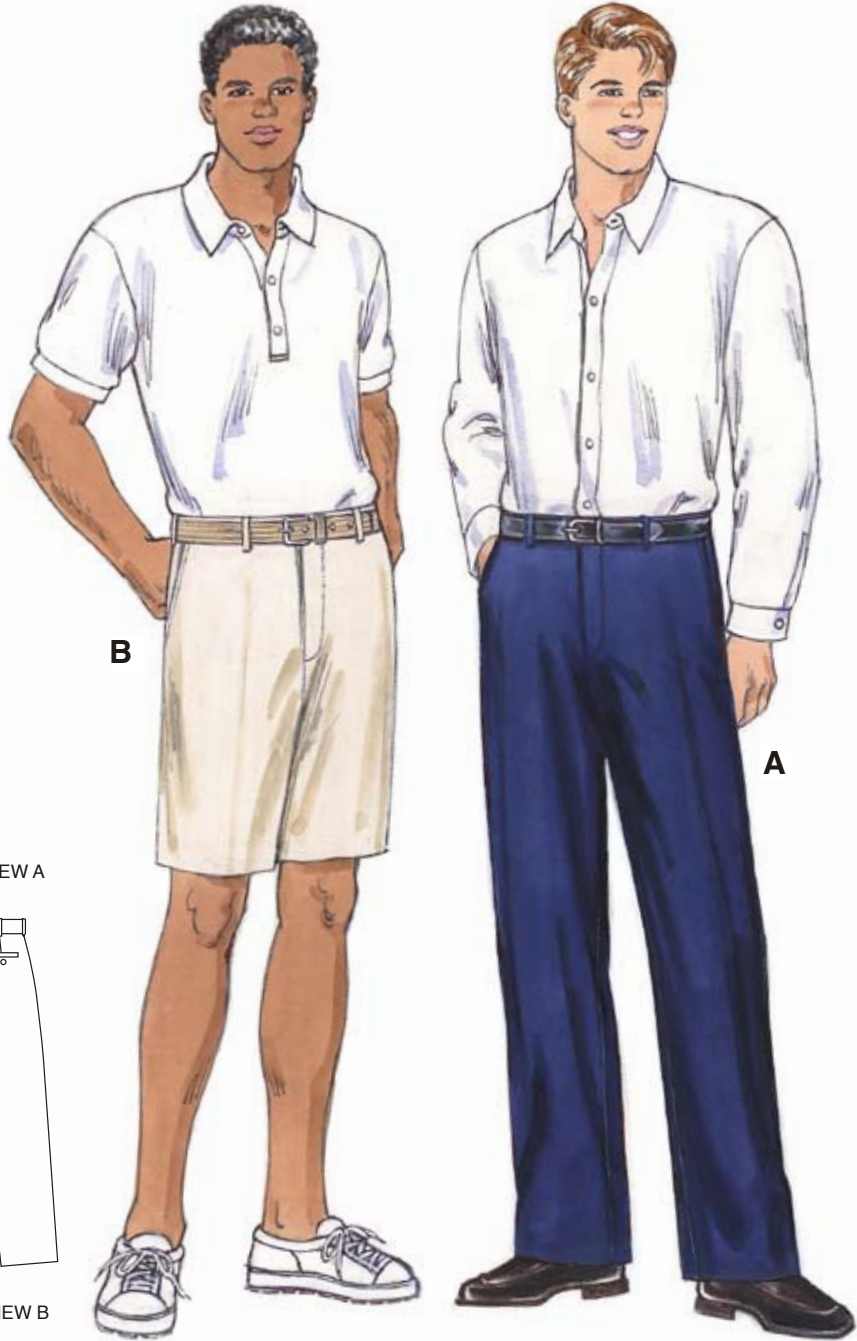
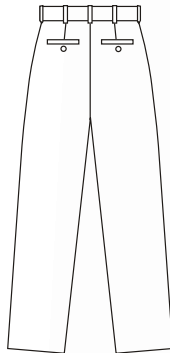


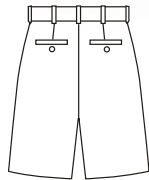
shirt
2777



PANTS VIEW A
Back



SHORTS VIEW B
Back



Men's flat-front pants and shorts have front side pockets, fly zipper, waistband with belt loops, back welt pockets with button closures.

KWIK·SEW®
3267 price

MEN'S PANTS & SHORTS
Sizes: S-M-L-XL-XXL

DESIGNED FOR MEDIUM WEIGHT WOVEN FABRICS

Suggested Fabrics: Wool, wool types, wool flannel, suitings, gabardine, twill, chino

Size	S	M	L	XL	XXL	
Finished Inside Leg Seam						
View A	31" (79 cm) All Sizes					
View B	9" (23 cm) All Sizes					
Material Required: Fabric requirement allows for nap, one-way design or shading. Extra fabric may be needed to match design or for shrinkage.						
Fabric 60" (152 cm) Wide						
Pants View A	2 1/8 (1.95)	2 1/4 (2.10)	2 1/4 (2.10)	2 3/8 (2.20)	2 3/4 (2.55)	yd (m)
Shorts View B	1 1/8 (1.05)	1 1/8 (1.05)	1 1/8 (1.05)	1 3/8 (1.30)	1 1/2 (1.40)	yd (m)
View A or B Lining	5/8 (0.60)	5/8 (0.60)	5/8 (0.60)	5/8 (0.60)	5/8 (0.60)	yd (m)
Fabric 45" (115 cm) Wide						
Pants View A	2 1/2 (2.30)	2 1/2 (2.30)	2 5/8 (2.40)	2 5/8 (2.40)	2 3/4 (2.55)	yd (m)
Shorts View B	1 3/8 (1.30)	1 3/8 (1.30)	1 5/8 (1.50)	1 3/4 (1.60)	1 3/4 (1.60)	yd (m)
View A or B Lining	1 (0.95)	1 (0.95)	1 (0.95)	1 (0.95)	1 (0.95)	yd (m)
Fusible Interfacing 24" (60 cm) Wide						
View A or B	3/4 (0.70)	3/4 (0.70)	3/4 (0.70)	7/8 (0.80)	7/8 (0.80)	yd (m)

Notions: Thread, One 9" (23 cm) zipper, three 5/8" (15 mm) buttons, hook & eye.
NOTE: Purchase suggested length of zipper or longer, zipper will be trimmed.