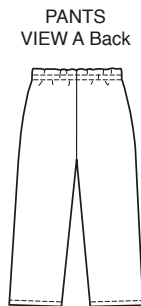
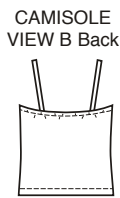




Girls' sleepwear. View A shirt has short sleeves and crew neckline with self-fabric neckband. View B camisole has spaghetti straps and elastic at top edge. Pull-on shorts and cropped pants have elastic in casing at waist, and fake fly. Shorts have side hemline slits.



KWIK-SEW®
3477 price

GIRLS' SLEEPWEAR

Sizes: XS(4-5)-S(6)-M(7-8)-L(10)-XL(12-14)

PANTS & SHORTS DESIGNED FOR LIGHTWEIGHT WOVEN FABRICS

Suggested Fabrics: Cotton, cotton types, broadcloth, silk, silk-like fabrics

TOPS DESIGNED FOR STRETCH KNITS ONLY WITH 25% STRETCH

Suggested Fabrics: Interlock, textured knits, pointelle jersey, stretch terry

Standard Body Measurements:

Size	XS (4-5)	S (6)	M (7-8)	L (10)	XL (12-14)	
Height	42 (107)	46 (117)	50 (127)	55 (140)	60 (152)	" (cm)
Chest	23 1/2 (60)	25 (64)	26 1/2 (67)	28 1/2 (72)	31 (79)	" (cm)
Waist	22 (56)	23 (58)	24 (61)	25 (64)	27 (68)	" (cm)
Hip	24 (61)	25 1/2 (65)	27 1/2 (70)	30 (76)	32 (81)	" (cm)

Finished Inside Leg Seam

Pants View A	11 3/4 (30)	13 1/4 (33)	14 3/4 (37)	16 1/2 (42)	18 1/2 (47)	" (cm)
Shorts View B	1 (2.5)	1 1/8 (3)	1 3/8 (3.5)	1 1/2 (4)	1 3/4 (4.5)	" (cm)

Finished Length at Center Back from Natural Neckline

Top View A	13 (33)	14 (36)	15 1/2 (39)	17 (43)	18 1/4 (46)	" (cm)
Camisole View B	12 (31)	13 (33)	14 1/2 (36)	16 (40)	17 1/4 (44)	" (cm)

Material Required: Fabric requirement allows for nap, one-way design or shading. Extra fabric may be needed to match design or for shrinkage.

Fabric 60" (152 cm) Wide

Top View A	1/2 (0.50)	5/8 (0.60)	5/8 (0.60)	5/8 (0.60)	3/4 (0.70)	yd (m)
Camisole View B	3/8 (0.35)	3/8 (0.35)	1/2 (0.50)	1/2 (0.50)	1/2 (0.50)	yd (m)
Pants View A	3/4 (0.70)	3/4 (0.70)	7/8 (0.80)	7/8 (0.80)	1 (0.95)	yd (m)
Shorts View B	3/8 (0.35)	3/8 (0.35)	1/2 (0.50)	1/2 (0.50)	1/2 (0.50)	yd (m)

Fabric 45" (115 cm) Wide

Pants View A	3/4 (0.70)	3/4 (0.70)	7/8 (0.80)	1 3/8 (1.30)	1 1/2 (1.40)	yd (m)
Shorts View B	3/8 (0.35)	3/8 (0.35)	1/2 (0.50)	5/8 (0.60)	5/8 (0.60)	yd (m)

Notions: Thread. PANTS & SHORTS: 3/4 yd (0.70 m) of 3/4" (2 cm) wide elastic. CAMISOLE VIEW B: 1 yd (0.95 m) of 3/8" (1 cm) wide elastic.