



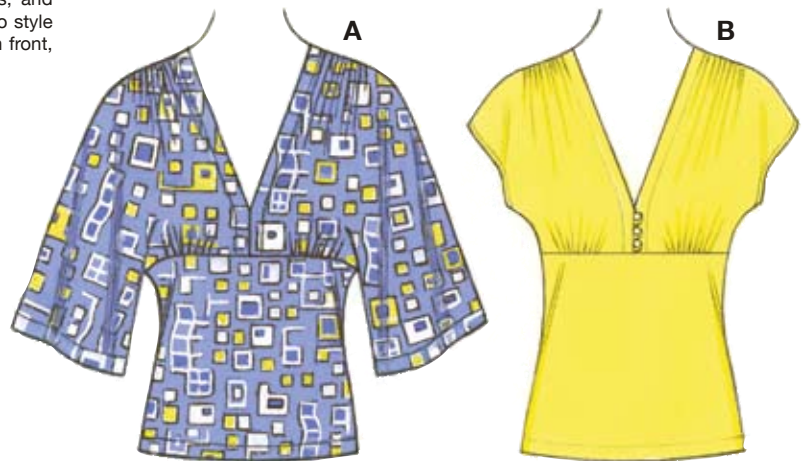
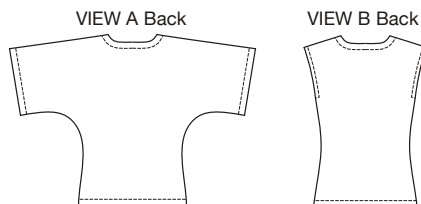
price **3616**

MISSES' TOPS
XS-S-M-L-XL

Designed for stretch knits only with 35% stretch across the grain

Suggested Fabrics: Interlock, textured knits, stretch velvet, stretch velour, fabric with Spandex Lycra®, matte jersey.

Misses' close fitting tops have V-neckline finished with facings, and gathers on front at shoulders and under bust. View A has kimono style sleeves. View B has decorative three button and loop closure on front, and extended shoulders forming cap sleeves.



Size	XS	S	M	L	XL	
Finished Length at Center Back						
View A & B	22 (56)	22 1/4 (57)	23 (58)	23 1/2 (59)	24 (61)	" (cm)
Material Required: Fabric requirement allows for nap, one-way design or shading. Extra fabric may be needed to match design or for shrinkage.						
Fabric 60" (152 cm) Wide						
View A	1 1/8 (1.05)	1 3/8 (1.20)	1 3/8 (1.20)	1 1/2 (1.30)	1 1/2 (1.30)	yd (m)
View B	7/8 (0.80)	7/8 (0.80)	7/8 (0.80)	7/8 (0.80)	7/8 (0.80)	yd (m)
Fusible Interfacing 24" (60 cm) Wide						
View A or B	1/2 (0.50)	1/2 (0.50)	1/2 (0.50)	1/2 (0.50)	1/2 (0.50)	yd (m)
Notions: Thread. View B: Three 1/2" (12 mm) buttons.						