

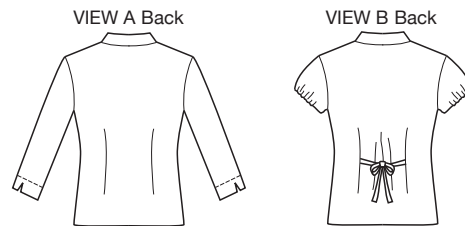


price **3620** MISSES' BLOUSES
XS-S-M-L-XL

Designed for lightweight woven fabrics

Suggested Fabrics: Cotton, cotton types, chambray, shirtings, challis, linen, silk, silk types.

Misses' fitted blouses have V-neckline, collar, bust darts, back waist darts, and front button closure. View A has three-quarter length sleeves finished with facings and wide ties attached in side seams. View B has shawl collar, short sleeves with elastic rolled into casings, and back ties attached in waist darts.



Size	XS	S	M	L	XL	
Finished Length at Center Back						
View A & B	22 (56)	22 3/4 (58)	23 1/2 (59)	24 (61)	24 3/4 (63)	" (cm)
Material Required: Fabric requirement allows for nap, one-way design or shading. Extra fabric may be needed to match design or for shrinkage.						
Fabric 60" (152 cm) Wide						
View A	1 5/8 (1.50)	1 5/8 (1.50)	1 3/4 (1.60)	1 3/4 (1.60)	1 7/8 (1.75)	yd (m)
View B	1 1/8 (1.05)	1 1/8 (1.05)	1 1/4 (1.15)	1 1/4 (1.15)	1 3/4 (1.60)	yd (m)
Fabric 45" (115 cm) Wide						
View A	1 7/8 (1.75)	2 3/8 (2.20)	2 3/8 (2.20)	2 1/2 (2.30)	2 5/8 (2.40)	yd (m)
View B	1 5/8 (1.50)	1 3/4 (1.60)	1 3/4 (1.60)	1 7/8 (1.75)	2 (1.85)	yd (m)
Fusible Interfacing 24" (60 cm) Wide						
View A & B	7/8 (0.80)	7/8 (0.80)	1 (0.95)	1 (0.95)	1 (0.95)	yd (m)
Notions: Thread. Five 1/2" (12 mm) buttons. View B: 1 yd (0.95 m) of 3/8" (1 cm) wide elastic.						