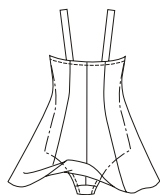
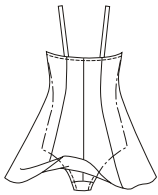


Misses' princess line swim dress with flared skirt has lining with attached panties. Leg openings and top edge are finished with elastic. View A has empire waist with gathered front bodice and shoulder straps with elastic. View B has shaped empire waist with self fabric tie at center front, and wide shoulder straps. Sew-in or pin-in bra cups can be used.

VIEW A Back

VIEW B Back



ACTIVE & SWIMWEAR

KWIK·SEW®
2690 price

MISSSES' SWIM DRESS DESIGNED FOR TWO-WAY STRETCH FABRICS WITH 75% STRETCH
 Sizes: S-M-L-XL-XXL Suggested Fabrics: Swimwear fabric with spandex Lycra®

Size	S	M	L	XL	XXL	
Material Required: Fabric requirement allows for nap, one-way design or shading. Extra fabric may be needed to match design or for shrinkage.						
Fabric 60" (152 cm) Wide						
View A	1 (0.95)	1 1/8 (1.05)	1 1/8 (1.05)	1 1/4 (1.15)	1 3/8 (1.30)	yd (m)
View B	1 1/8 (1.05)	1 1/8 (1.05)	1 1/4 (1.15)	1 1/4 (1.15)	1 3/8 (1.30)	yd (m)
Fabric 45" (115 cm) Wide						
View A	1 5/8 (1.50)	1 3/4 (1.60)	1 3/4 (1.60)	1 7/8 (1.75)	2 (1.85)	yd (m)
View B	1 5/8 (1.50)	1 3/4 (1.60)	1 3/4 (1.60)	1 7/8 (1.75)	2 (1.85)	yd (m)
Swimwear Lining 45" (115 cm) Wide						
View A or B	3/4 (0.70)	3/4 (0.70)	7/8 (0.80)	7/8 (0.80)	1 (0.95)	yd (m)
Notions: Thread, bra cups optional. VIEW A: 3/8" (1 cm) wide swimwear elastic - 3 yd (2.75 m) for sizes S-M; 3 1/2 yd (3.20 m) for sizes L-XL-XXL. VIEW B: 3/8" (1 cm) wide swimwear elastic - 2 1/2 yd (2.30 m) for sizes S-M-L; 3 yd (2.75 m) for sizes XL-XXL.						