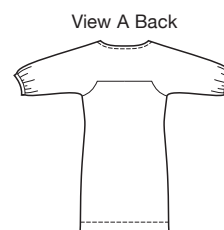




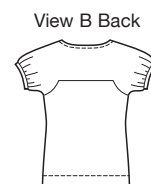
A



B



View A Back



View B Back

Designed for lightweight woven fabrics.

Suggested Fabrics: Challis, silk-like fabrics, georgette, charmeuse, rayon and blends, batiste, lawn.

Pull-over top and tunic have front and back yokes, and shoulders extend forming sleeves. Front has a gathered extension folded over front yoke. Sleeves are gathered at bottom edge and finished with self fabric bindings. View A sleeves are elbow length and View B sleeves are short.

price **3670**

MISSES' TOP & TUNIC
XS-S-M-L-XL

Size	XS	S	M	L	XL	
Finished Length at Center Back from Neckline						
View A	28 1/4 (72)	29 1/2 (75)	31 (79)	32 1/2 (82)	33 3/4 (86)	" (cm)
View B	21 (53)	22 (55)	22 1/2 (57)	23 1/2 (59)	24 (60)	" (cm)
Material Required: Fabric requirement allows for nap, one-way design or shading. Extra fabric may be needed to match design or for shrinkage.						
Fabric 60" (152 cm) Wide						
View A	1 5/8 (1.50)	1 5/8 (1.50)	1 3/4 (1.60)	1 7/8 (1.75)	1 7/8 (1.75)	yd (m)
View B	1 3/8 (1.30)	1 3/8 (1.30)	1 1/2 (1.40)	1 1/2 (1.40)	1 5/8 (1.50)	yd (m)
Fabric 45" (115 cm) Wide						
View A	2 3/8 (2.20)	2 1/2 (2.30)	2 1/2 (2.30)	2 5/8 (2.40)	2 3/4 (2.55)	yd (m)
View B	1 7/8 (1.75)	1 7/8 (1.75)	2 (1.85)	2 (1.85)	2 1/8 (1.95)	yd (m)
Notions: Thread.						