



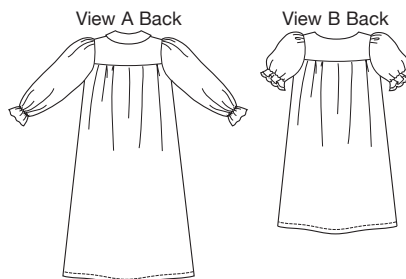
price **3747**

**MISSES' NIGHTGOWNS**  
XS-S-M-L-XL

Designed for woven fabrics.

Suggested Fabrics: Cotton, cotton types, flannel, lawn, batiste.

Gowns have front and back gathered to a double yoke. View A has round neckline with Peter Pan collar, front tab with button closure, and full length gathered sleeves. View B has scoop neckline, short gathered sleeves, and lace trim at bottom of sleeves and in front yoke seam.



Size	XS	S	M	L	XL	
<b>Finished Length from Natural Waist</b>	View A 35" (89 cm) — All Sizes		View B 25" (64 cm) — All Sizes			
<b>Material Required:</b> Fabric requirement allows for nap, one-way design or shading. Extra fabric may be needed to match design or for shrinkage.						
<b>Fabric 60" (152 cm) Wide</b>						
View A	2 1/2 (2.30)	2 1/2 (2.30)	3 (2.75)	3 (2.75)	3 (2.75)	yd (m)
View B	1 3/4 (1.60)	1 3/4 (1.60)	2 1/4 (2.10)	2 1/4 (2.10)	2 1/4 (2.10)	yd (m)
<b>Fabric 45" (115 cm) Wide</b>						
View A	3 7/8 (3.55)	3 7/8 (3.55)	4 3/8 (4.00)	4 3/8 (4.00)	4 3/8 (4.00)	yd (m)
View B	2 1/4 (2.10)	3 (2.75)	3 (2.75)	3 (2.75)	3 3/8 (3.10)	yd (m)
<b>Fusible Interfacing 24" (60 cm) Wide</b>						
View A	1/2 (0.50)	1/2 (0.50)	1/2 (0.50)	1/2 (0.50)	1/2 (0.50)	yd (m)
<b>Notions:</b> Thread. <b>View A:</b> 5/8 yd (0.60 m) of 1/4" (6 mm) wide elastic; five 1/2" (12 mm) buttons. <b>View B:</b> 1 yd (0.95 m) of 1/4" (6 mm) wide elastic; 1/2"-1" (12 mm-25 mm) wide lace, eyelet or decorative trim: 1 5/8 yd (1.50 m) for sizes XS-S; 2 yd (1.85 cm) for sizes M-L-XL.						